

Stainless Steel Pulsation Dampers

Specification



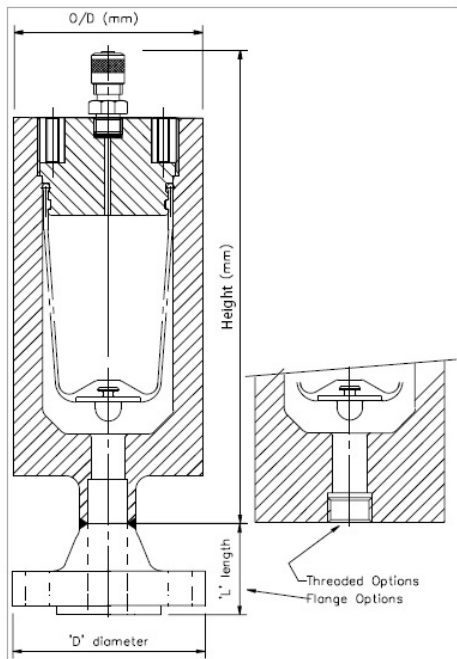
Design Features include:

CE certified in accordance with the PED (97/23/EC) where applicable.
Manufactured from high grade Stainless Steel, other materials available.

- Nominal capacities 0.1 litre to 5 litres.
- Working pressures of up to 690 bar
- Wide range of separator materials available
- Designed to PD5500, ASME VIII Div 1 available as an option.
- Material certifications are available to EN10204 3.1 b
- Third party witness is available on request.
- NACE MR0175 compliance is available on request.

APD Range							
Volume (litres)							
	0.1	0.25	0.5	1	2	3	5
Height (mm)	190	212	242	262	397	425	437
O/D (mm)	60	76	90	127	127	153	170
Weight (kg)	2.7	4.5	6	15	20	31	33
M.W.P. (bar)	350	300	250	180	180	250	120

BPD Range							
Volume (litres)							
	0.1	0.25	0.5	1	2	3	5
Height (mm)	202	236	272	290	426	448	472
O/D (mm)	76	102	127	146	146	170	190
Weight (kg)	5.4	12	21	27	37	52	55
M.W.P. (bar)	690	690	690	450	450	430	300



Optional Flange Available

Dimensions (mm)		Nominal Flange Sizes					
		½"	¾"	1"	1 ¼"	1 ½"	2"
150lb	Diameter "D"	88.9	98.4	107.9	117.5	127	152.4
	Length "L"	47.6	52.4	55.6	57.1	61.9	63.5
	Weight (kg)	0.5	0.7	1.1	1.5	1.8	2.7
300lb	Diameter "D"	95.2	117.5	123.8	133.4	155.6	165.1
	Length "L"	52.4	57.1	61.9	65.1	68.3	69.8
	Weight (kg)	0.8	1.3	1.7	2.2	3.2	3.6
600lb	Diameter "D"	95.2	117.5	123.8	133.4	155.6	165.1
	Length "L"	52.4	57.1	61.9	66.7	69.8	73
	Weight (kg)	0.9	1.5	1.9	2.6	3.3	4.7
900lb	Diameter "D"	120.6	130.2	149.2	158.7	177.8	215.9
	Length "L"	60.3	69.8	73	73	82.5	101.6
	Weight (kg)	1.9	2.6	3.8	4.4	6.1	11.1
1500lb	Diameter "D"	120.6	130.2	149.2	158.7	177.8	215.9
	Length "L"	60.3	69.8	73	73	82.5	101.6
	Weight (kg)	1.9	2.6	3.8	4.4	6.1	11.1
2500lb	Diameter "D"	133.3	139.7	158.8	184.2	203.2	235
	Length "L"	73	79	89	95	111	127
	Weight (kg)	3.6	4.1	5.9	9	13	19

Distribuidor autorizado para todo o Brasil

➤ Dúvidas ou esclarecimentos, favor contatar nosso depto técnico.

Model Numbers



APD 001 0 0001

Damper Type

APD = Standard Pressure
BPD = High Pressure
CPD = ASME Standard Pressure
DPD = ASME High Pressure
EPD = 'Special' Alternative Materials

Nominal Volume - Litres

001 = 0.1	200 = 2
025 = 0.25	300 = 3
050 = 0.5	500 = 5
100 = 1	

Bladder Material

0 = NITRILE
A = EPDM
6 = VITON

Other bladder materials available on request.

Fluid End Connection

0001 = 1/2" BSP (F)
0002 = 3/4" BSP (F)
0003 = 1" BSP (F)
0004 = 1 1/2" BSP (F)
0005 = 1/2" NPT (F)
0006 = 2" BSP (F)
0007 = 3/4" NPT (F)

0010 = 1/2" 150 lb R/F Flange
0011 = 1" 150 lb R/F Flange
0012 = 1/2" 300 lb R/F Flange
0013 = 1" 300 lb R/F Flange
0016 = 2" 150 lb R/F Flange
0032 = 2" 300 lb R/F Flange

Other thread and flange options available on request.

- A Magral se reserva o direito de promover alterações sem aviso prévio.

➤ **Dúvidas ou esclarecimentos, favor contatar nosso depto técnico.**

Distribuidor autorizado para todo o Brasil

ANOTAÇÕES



Nº E201480

Distribuidor autorizado para todo o Brasil

➤ **Dúvidas ou esclarecimentos, favor contatar nosso depto técnico.**

MAGRAL[®]
HIDRÁULICA E PNEUMÁTICA
www.magral.com.br - 11 2021-7202