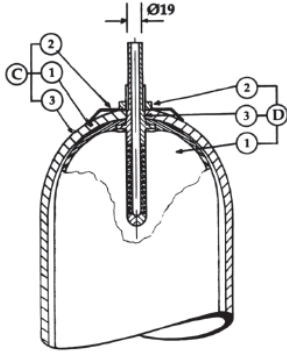


Transfer Barrier Accumulator

207, 310, 345 & 420 bar



Specification

Shell

Oil Service - seamless shell, designed and manufactured to European specifications CE marked. Material - Chromium-molybdenum steel. Working pressure 207, 310, 345 and 420 bar. Water service as above with shell interior epoxy resin lined.

Label

With assembly specification and installation details.

Witness hydro-pneumatic pressure tests

These can be carried out on complete accumulators and can be undertaken for a specific inspection authority and/or customer requirement as an optional extra.

Material Certification

Available on request for all major pressure loaded parts to EN 10204 3.1

Finish

One coat primer paint as standard. Special paints available.

Bladder

Totally enclosed construction with an extensive range of elastomers available. See Bladder information for further details.

Fluid Port Assembly

Integral high-flow port and poppet valve assembly with an anti-extrusion ring. For options see overleaf.

Safety

All gas-loaded accumulators are pressurised vessels and it is recommended that safety consideration be given to the application in which they are used. A relief valve should always be fitted to the hydraulic system with the option of a burst disc to protect the accumulator. If there is a fire risk in the vicinity of the accumulator, then a fusible/eutectic plug should be fitted. See Installation and Servicing data sheet for information regarding installation of accumulators.

Accessories

A complete range of accumulator accessories are available from OLAER Fawcett Christie.

Spare Parts

Available on request.

The information in this datasheet is subject to change without prior notice.

Olaer Fawcett Christie Ltd | Glendale Avenue | Sandycroft Industrial Estate | Sandycroft | Deeside | Flintshire | CH5 2QP | UK | Tel: +44 (0)1244 535515
www.olaerfawcettchristie.co.uk

Transfer Barrier Accumulators_Version2_04052010

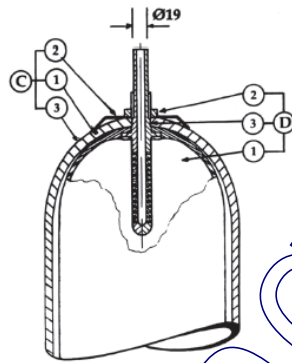
- A Magral se reserva o direito de efetuar alterações sem aviso prévio.
- **Dúvidas ou esclarecimentos, favor contatar nosso depto técnico.**

Distribuidor autorizado para todo o Brasil



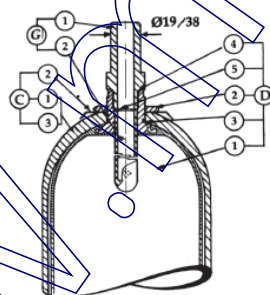
MAGRAL
HIDRÁULICA E PNEUMÁTICA
www.magral.com.br - 11 2021-7202

Nominal Capacity Litres	Effective Gas vol. Litres	Work press. bar	Max Flow Rate lt/min	Weight Dry Kilo	Dimensions in mm unless stated otherwise and subject to manufacturer's tolerances												
					B Inches	C	D	E	F	G	H	J Inches	K	L	M	N	P
10	9.4	207	749	27.00	7/8 UNF	34	76	575	407	221	70	2 BSPF	76	36	46	9	69
10	9.4	310	749	30.00	7/8 UNF	34	76	575	407	221	70	2 BSPF	76	36	46	9	69
10	9.4	345	749	30.00	7/8 UNF	34	76	575	407	228	70	2 BSPF	76	36	46	9	69
10	9.4	420	749	34.00	7/8 UNF	34	76	575	407	228	70	2 BSPF	76	36	46	9	69
20	18.8	207	749	46.00	7/8 UNF	34	76	886	718	221	70	2 BSPF	76	36	46	9	69
20	18.8	310	749	46.00	7/8 UNF	34	76	886	718	221	70	2 BSPF	76	36	46	9	69
20	18.8	345	749	46.00	7/8 UNF	34	76	886	718	228	70	2 BSPF	76	36	46	9	69
20	18.8	420	749	54.00	7/8 UNF	34	76	886	718	228	70	2 BSPF	76	36	46	9	69
28	25.8	207	749	61.00	7/8 UNF	34	76	1158	990	221	70	2 BSPF	76	36	46	9	69
28	25.8	345	749	61.00	7/8 UNF	34	76	1158	990	228	70	2 BSPF	76	36	46	9	69
37	35.2	207	749	74.00	7/8 UNF	34	76	1407	1239	228	70	2 BSPF	76	36	46	9	69
37	35.2	310	749	74.00	7/8 UNF	34	76	1407	1239	221	70	2 BSPF	76	36	46	9	69
37	35.2	345	749	74.00	7/8 UNF	34	76	1407	1239	221	70	2 BSPF	76	36	46	9	69
37	35.2	420	749	86.00	7/8 UNF	34	76	1407	1239	228	70	2 BSPF	76	36	46	9	69
54	49.2	207	749	102.00	M50x 1.5	70	94	1922	1766	228	70	2 BSPF	76	36	46	9	69
54	49.2	310	749	102.00	M50x 1.5	70	94	1922	1766	221	70	2 BSPF	76	36	46	9	69
54	49.2	345	749	102.00	M50x 1.5	70	94	1922	1766	228	70	2 BSPF	76	36	46	9	69
54	49.2	420	749	119.00	M50x 1.5	70	94	1922	1766	228	70	2 BSPF	76	36	46	9	69



Type 1A
10-37 litre models

Key	Item
C	Shell assembly comprising
C1	Shell
C2	Label
C3	Warning label
D	Bladder assembly comprising
D1	Bladder
D2	Stem tube
D3	'O' ring system



Type 1A 19mm
Type 7A 38mm
54 litre models only

Key	Item
C	Shell assembly comprising
C1	Shell
C2	Label
C3	Warning label
D	Bladder assembly comprising
D1	Bladder
D2	Stem tube
D3	'O' ring system
D4	'O' ring seal
D5	Flat seal
G	End fitting assembly
G1	T.B. adaptor
G2	Stem tube

The information in this datasheet is subject to change without prior notice.

Olaer Fawcett Christie Ltd. | Glendale Avenue | Sandycroft Industrial Estate | Sandycroft | Deeside | Flintshire | CH5 2QP | UK | Tel: +44 (0)1244 535515
www.olaerfawcettchristie.co.uk

Transfer Barrier Accumulators_Version2_04052010

Distribuidor autorizado para todo o Brasil

- A Magral se reserva o direito de efetuar alterações sem aviso prévio.
- **Dúvidas ou esclarecimentos, favor contatar nosso depto técnico.**



Transfer Barrier Accumulator

Model numbers

54 - 0 - 1A - 00 - 20 - 1

Nominal Volume - Litres

Bladder Material

- 0 = Nitrile Standard
- 1 = Butyl
- 2 = Low Temperature Nitrile
- 3 = Low permeability

Other materials available

Bladder kit
Quote full part No. typically 5401A-00 which will include the bladder assembly with stem, 'O' seal, lock nut, flat seal and adaptor, 'O' seal anti-extrusion ring, fluid port, 'O' seal and back up ring and bleed plug bonded seal.

Bladder stem/ Gas valve

- 10 - 37L
- 1A = 3/8" UNF/19mm
- 7G = 7/8" UNF M St. Steel
- DA = 7/8" UNF/19mm St. Steel

- 54L
- 1A = M50 x 1.5 /19mm
- 7A = M50 x 1.5 /38mm
- DA = M50 x 1.5 /19mm St. Steel
- 2H = M50 x 1.5 /38mm St. Steel
- 5L = M50 x 1.5 /1" BSP Fem
- 7G = 7/8" UNF St. Steel
- M50 x 1.5 / 1.4" BSPM
- 7/8" UNF / 302-32

Shell and Fluid port options

- 00 = Oil Service
- 02 = Low/medium corrosive service
- 04 = NPT fluid port Low/medium corrosive service
- 13 = NPT fluid port - oil service

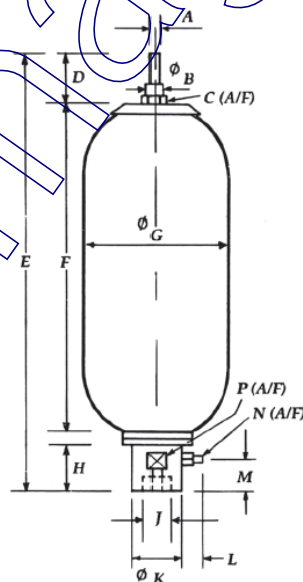
Note: for other assembly options contact Olaer Fawcett Christie

Maximum Working Pressure

- 20 = 207 bar
- 31 = 310 bar
- 34 = 345 bar
- 35 = 350 bar
- 42 = 420 bar

Design standard/Authority Approval

- 1 = Lloyds/CE



The information in this datasheet is subject to change without prior notice.

Olaer Fawcett Christie Ltd. | Glendale Avenue | Sandycroft Industrial Estate | Sandycroft | Deeside | Flintshire | CH5 2QP | UK | Tel: +44 (0)1244 535515
www.olaerfawcettchristie.co.uk

Transfer Barrier Accumulators_Version2_04052010

Distribuidor autorizado para todo o Brasil



MAGRAL
HIDRÁULICA E PNEUMÁTICA
www.magral.com.br - 11 2021-7202

- A Magral se reserva o direito de efetuar alterações sem aviso prévio.
- **Dúvidas ou esclarecimentos, favor contatar nosso depto técnico.**